

# ALISO LIVE/WORK 1371

1,371 SQ FT + 330 SQ FT  
COMMERCIAL SPACE

2 BEDROOM

2 BATHROOM

SIDE-BY-SIDE 2-CAR GARAGE

## AVAILABLE OPTIONS

LA CANTINA DOORS TO DECK

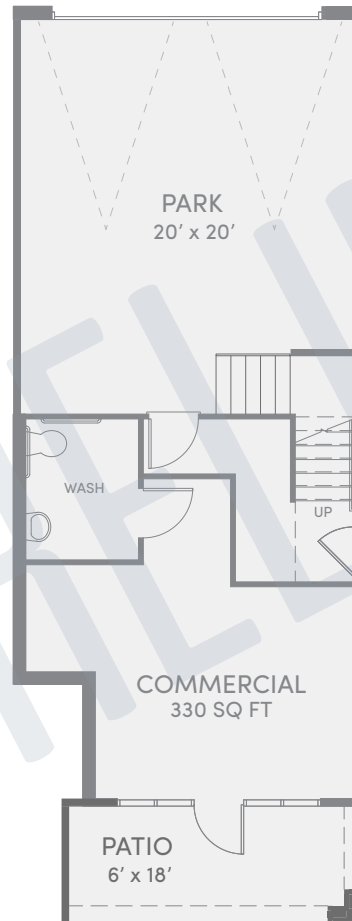
DECK CABINETS



34202 Del Obispo Street  
Dana Point, CA 92629

[LIVESOUTHCOVE.COM](http://LIVESOUTHCOVE.COM)

LEVEL  
01



LEVEL  
02



This is not an offer to sell, but it is intended for information only. The developer reserves the right to make modifications in materials, pricing, specifications, plans, designs, scheduling and delivery of the homes without prior notice. All square footage is an estimate only and subject to change at any time. 03.14.18

