

# ALISO 1943

1,943 SQ FT

3 BEDROOM

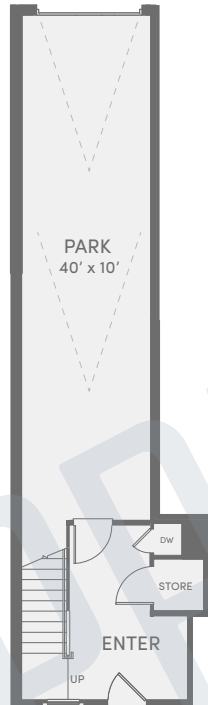
2 BATHROOM

TANDEM 2-CAR GARAGE

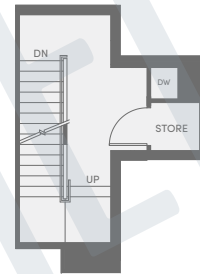
LA CANTINA DOORS TO DECK

DUMBWAITER

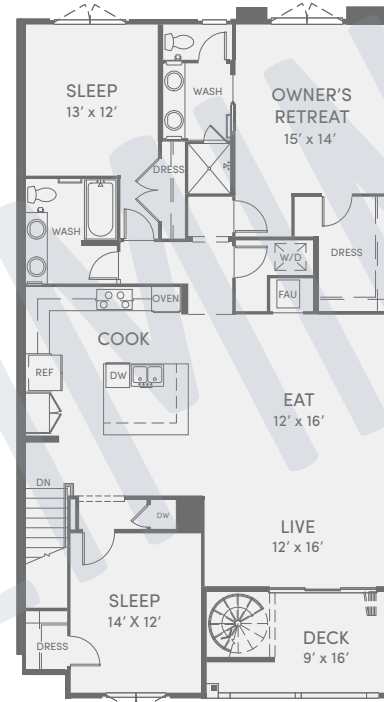
LEVEL  
01



LEVEL  
02



LEVEL  
03



LEVEL  
04



\*Varied per building location.



34202 Del Obispo Street  
Dana Point, CA 92629

LIVESOUTHCOVE.COM

This is not an offer to sell, but it is intended for information only. The developer reserves the right to make modifications in materials, pricing, specifications, plans, designs, scheduling and delivery of the homes without prior notice. All square footage is an estimate only and subject to change at any time. 03.14.18

