

# ALISO 1930

1,930 SQ FT

3 BEDROOM

2 BATHROOM

TANDEM 2-CAR GARAGE



34202 Del Obispo Street  
Dana Point, CA 92629

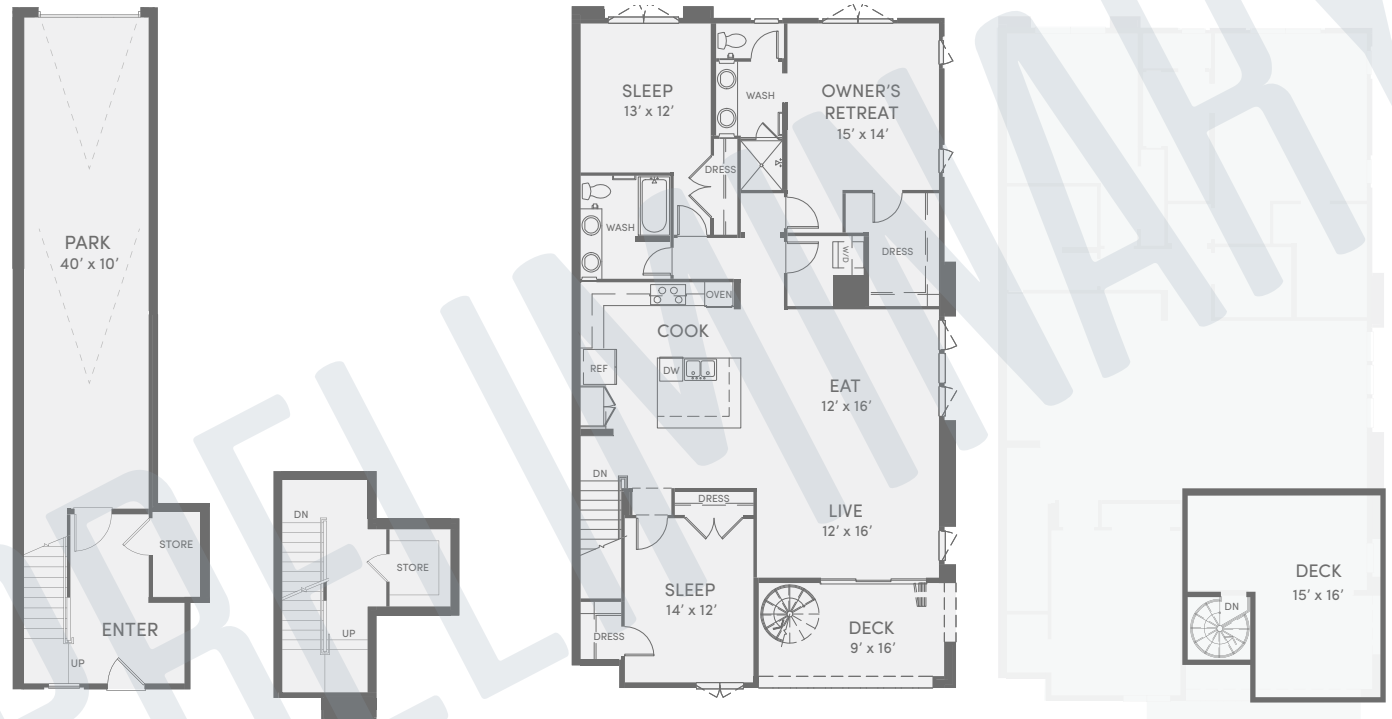
[LIVESOUTHCOVE.COM](http://LIVESOUTHCOVE.COM)

LEVEL  
01

LEVEL  
02

LEVEL  
03

LEVEL  
04



\*Varied per building location.

This is not an offer to sell, but it is intended for information only. The developer reserves the right to make modifications in materials, pricing, specifications, plans, designs, scheduling and delivery of the homes without prior notice. All square footage is an estimate only and subject to change at any time. 5.1.5.17\_A1A



# ALISO 1930

## AVAILABLE OPTIONS

LA CANTINA DOORS TO DECK

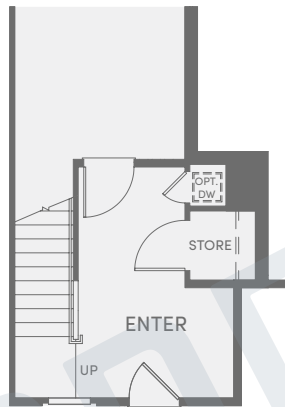
DUMBWAITER



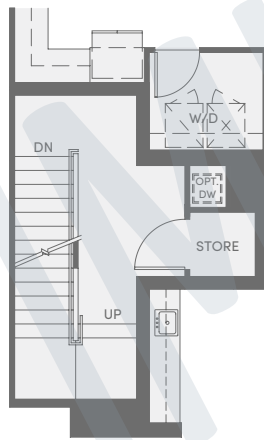
34202 Del Obispo Street  
Dana Point, CA 92629

[LIVESOUTHCOVE.COM](http://LIVESOUTHCOVE.COM)

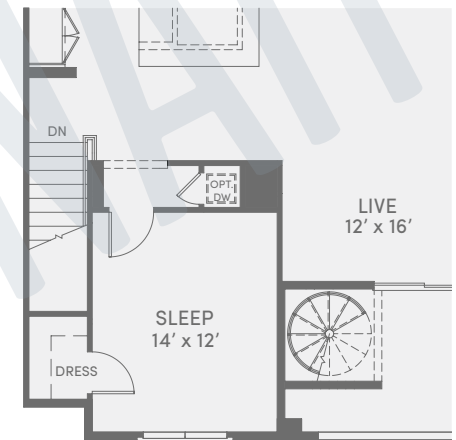
LEVEL  
01



LEVEL  
02



LEVEL  
03



This is not an offer to sell, but it is intended for information only. The developer reserves the right to make modifications in materials, pricing, specifications, plans, designs, scheduling and delivery of the homes without prior notice. All square footage is an estimate only and subject to change at any time. 1.9.17\_A1A

