

ALISO 1404

1,404 SQ FT

2 BEDROOM

2 BATHROOM

TANDEM 3-CAR GARAGE

AVAILABLE OPTIONS

LA CANTINA DOORS TO DECK

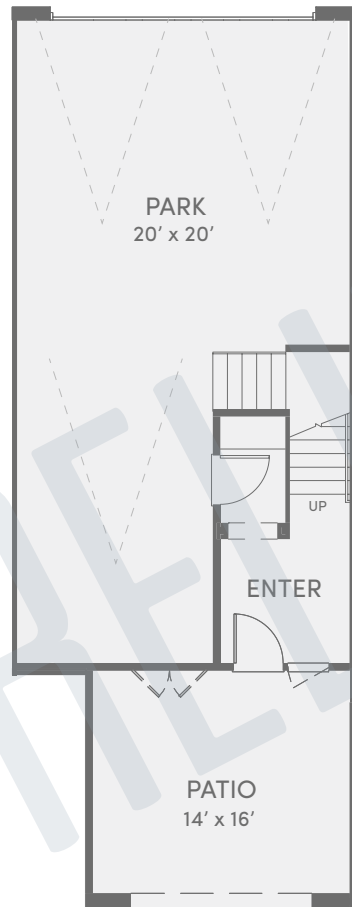
DECK CABINETS AND SINK



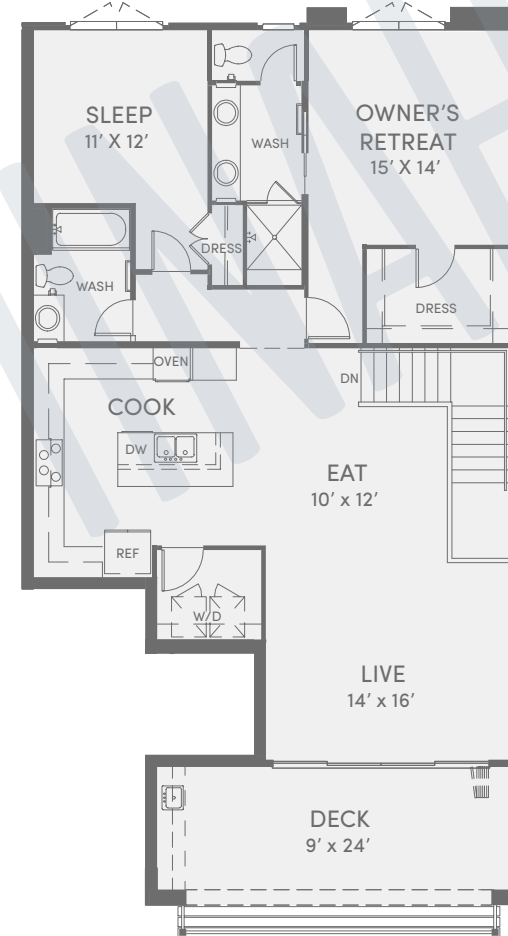
34202 Del Obispo Street
Dana Point, CA 92629

LIVESOUTHCOVE.COM

LEVEL
01



LEVEL
02



This is not an offer to sell, but it is intended for information only. The developer reserves the right to make modifications in materials, pricing, specifications, plans, designs, scheduling and delivery of the homes without prior notice. All square footage is an estimate only and subject to change at any time. 1.9.17_A1XB

